

Switchgear type RKS5-1R/3 for rated voltage 500V



Switchgear type RKS5-1R/3 is an electrical device designed for use in the underground mining pits in non-explosive conditions and on the ground.

Switchgear type RKS5-1R/3 is designed for connecting and switching on receivers (especially elevators, lifts, etc.) in the 3-phase mine grid with insulated star point on the transformer (system IT) of rated grid voltage of 500V.

TECHNICAL DATA:

ingress protection	IP54
insulation rated voltage of main circuits	660 V
insulation rated voltage of auxiliary circuits	250 V
supply rated voltage	500V, 50 Hz
maximum outlet load current	acc. to table 1
number of 500 V outlets	1
dimensions	1200 x 600 x 370mm (H x W x D)
weight	50 kg

Table 1

Switchgear type	Maximum outlet rated current [A]	Rated current of clamps from the supply side (Inz) [A]
RKS5-1R/3	125	400

Note:

Load drains of the outlets can be adapted to the power of the receivers on request, however they can't exceed the values in table 1.

CONSTRUCTION

Switchgear is composed of plate steel housing mounted on a support frame which allows the device to be hanged on a chain or placed on the ground.

MODE OF OPERATION

The switchgear can operate in two control modes: LOCAL and REMOTE. In LOCAL control mode the 500V outlet is turned on/off by button from face of the switchgear.

In REMOTE mode the outlet can be turned on/off by buttons located on the external control desk or on external control cabinet.

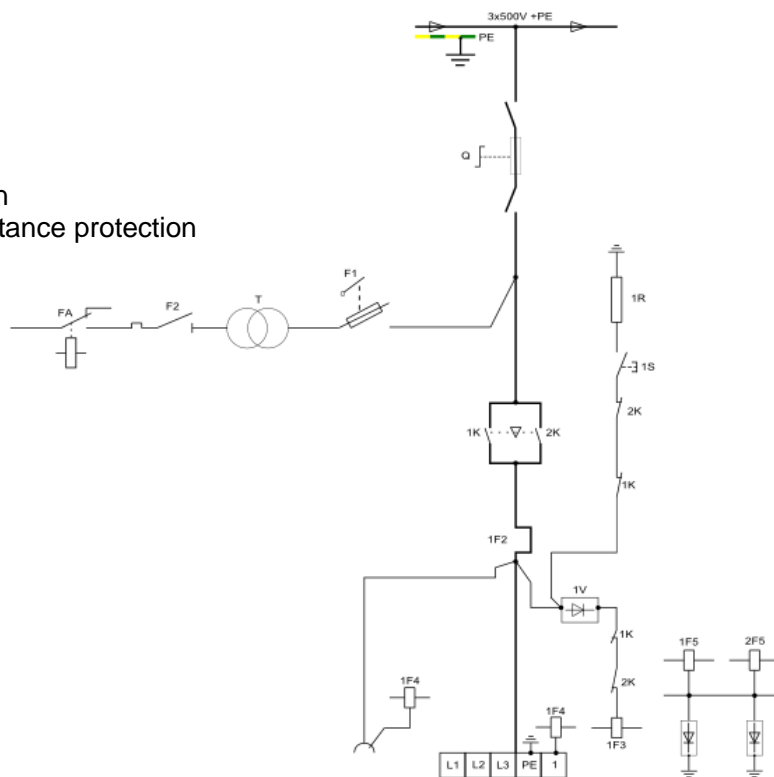
Switchgear type RKS5-1R/3 is equipped with power protections against the effects of short-circuits, overloads, and growing of the ground resistance.

Turning off the 500V outlet is carried out by a control button located on the face of the switchgear or by an emergency button.

SCHEMATIC DIAGRAM

Legend:

- Q - fuse disconnecter
- 1K,2K - contactors
- 1F2 - overload protection
- 1F3 - low insulation resistance protection



Orders should be submitted in writing or by fax to the address:

 **Instal-Service PL**

Spółka z ograniczoną odpowiedzialnością
Sipółka komandytowa
58-506 Jelenia Góra, ul. Wrocławska 15a
tel. (+48 075) 64-57-950
fax. (+48 075) 64-57-951
e-mai: instal@instal-service.pl